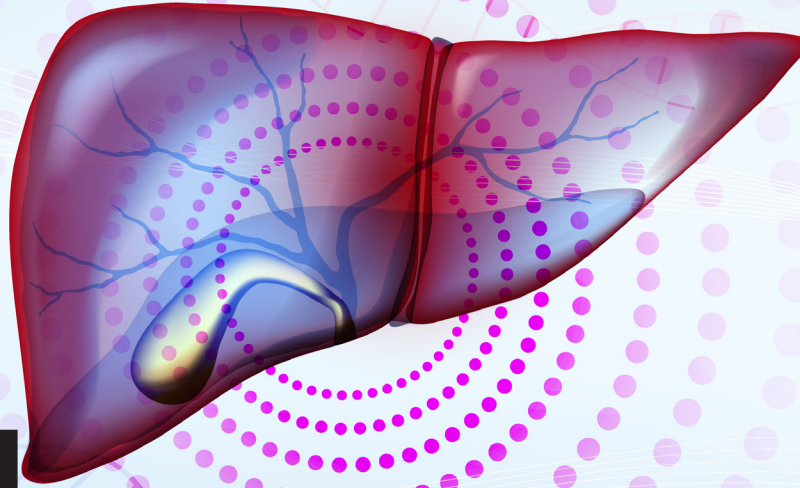


2026

IOWA LIVER WELLNESS SYMPOSIUM

CIRRHOSIS CARE IN MOTION



FRIDAY, SEPTEMBER 25, 2026
8 AM - 5 PM

HYATT REGENCY
300 EAST 9TH STREET
CORALVILLE, IOWA

PROVIDED BY:
The University of Iowa Roy J. and Lucille A. Carver College of Medicine
Department of Internal Medicine-Division of Gastroenterology and Hepatology

ENDORSED BY:
International Liver Transplantation Society (ILTS)

IOWA
HEALTH CARE

OVERVIEW

Cirrhosis and its clinical complexity demand coordinated care across the healthcare spectrum. As advances in the understanding and management of portal hypertension continue to evolve, there is a clear need to update clinicians on the latest evidence, guideline recommendations, and emerging therapeutic strategies. This conference aims to equip healthcare professionals with practical, up-to-date knowledge to optimize the diagnosis, monitoring, and management of cirrhosis and its complications. To achieve this, the program will bring together a multidisciplinary faculty to deliver an integrated, patient-centered perspective. Designed for a multidisciplinary audience, the sessions will highlight best practices across multiple levels of care, promote early recognition and intervention, and support more seamless, collaborative management of advanced chronic liver disease. By fostering shared understanding and communication across specialties, this initiative seeks to improve outcomes and quality of care for patients living with cirrhosis.

TARGET AUDIENCE

Specialties

Anesthesia
Cardiovascular Disease
Family Medicine
Internal Medicine
Surgery

Professions

Nurse
Nurse Practitioner
Physician
Physician Assistant

OBJECTIVES

1. Describe evolving epidemiologic trends in cirrhosis, including shifts in etiologies such as NAFLD/NASH and alcohol-associated liver disease
2. Explain new approaches to risk stratification and prognostication in compensated vs. decompensated cirrhosis
3. Apply current liver transplant referral and listing criteria, including MELD score thresholds and indications for early evaluation
4. Implement timely recognition of acute-on-chronic liver failure (ACLF) and pathways for urgent transplant consideration
5. Identify common infections in cirrhosis (e.g., SBP, sepsis, pneumonia, UTIs) and their pathophysiologic underpinnings.
6. Summarize the indications for endoscopic screening and primary prevention of varices
7. Explain the pathophysiology of ascites and diagnostic criteria for spontaneous bacterial peritonitis.
8. Identify indications for TIPS in refractory ascites and evaluate patient selection criteria
9. Implement treatment strategies including albumin, vasoconstrictors, and referral for TIPS or transplant.
10. Identify risk factors and diagnostic modalities for detecting PVT in cirrhosis.
11. Define the role of endoscopic ultrasound (EUS) and endoscopic-based therapies in managing portal hypertension.
12. Integrate endohepatology techniques into multidisciplinary liver care.
13. Apply updated noninvasive thresholds for variceal screening and risk stratification
14. Identify malnutrition, sarcopenia, and frailty using validated assessment tools.
15. Implement evidence-based dietary strategies including protein targets, meal timing, and supplementation
16. Integrate symptom management strategies for fatigue, pruritus, pain, encephalopathy, and ascites.

ACCREDITATION



In support of improving patient care, the University of Iowa Roy J. and Lucille A. Carver College of Medicine is jointly accredited by the Accreditation Council for Continuing Medical Education (ACCME), the Accreditation Council for Pharmacy Education (ACPE), and the American Nurses Credentialing Center (ANCC), to provide continuing education for the healthcare team.

Nurse: The University of Iowa Roy J. and Lucille A. Carver College of Medicine designates this activity for a maximum of 6.0 ANCC contact hours.

Physician: The University of Iowa Roy J. and Lucille A. Carver College of Medicine designates this live activity for a maximum of 6.0 AMA PRA Category 1 Credit(s)[™]. Physicians should claim only the credit commensurate with the extent of their participation in the activity.

Physician Associate: The University of Iowa Roy J. and Lucille A. Carver College of Medicine has been authorized by the American Academy of Physician Associates (AAPA) to award AAPA Category 1 CME credit for activities planned in accordance with AAPA CME Criteria. This activity is designated for 6.0 AAPA Category 1 CME credits. PAs should only claim credit commensurate with the extent of their participation.



Other Health Care Providers: A certificate of participation will be available after successful completion of an online evaluation. (It is the responsibility of the licensees to determine if this continuing education activity meets the requirements of their professional licensure board.)

CREDITS

AMA PRA Category 1 Credits[™] (6.00 hours)

AAPA Category 1 CME credit (6.00 hours)

ANCC Contact Hours (6.00 hours)

Non-Physician Attendance (6.00 hours)

REGISTRATION

Regular Registration (through September 18, 2026)

Physicians\$140.00

Pharmacists & Other Health Professionals\$70.00

Trainees - Students, Residents & Fellows\$55.00

Virtual Only Registration

Physicians\$120.00

Pharmacists & Other Health Professionals \$65.00

Trainees - Students, Residents & Fellows \$50.00

Late Registration (from September 19, 2026–Day of conference)

Physicians\$150.00

Pharmacists & Other Health Professionals\$90.00

Trainees - Students, Residents & Fellows\$75.00

CANCELLATION POLICY

If cancellation is requested prior to September 18, 2026, a full refund is available.

If cancellation is requested September 18, 2026 or later, a refund minus a \$50.00 cancellation fee is available.

If necessary, send cancellation request to cme@uiowa.edu.

DISCLOSURE POLICY:

University of Iowa Roy J. and Lucille A. Carver College of Medicine adheres to the ACCME's Standards for Integrity and Independence in Accredited Continuing Education. Any individuals in a position to control the content of a CE activity, including faculty, planners, reviewers or others are required to disclose all financial relationships with ineligible companies whose primary business is producing, marketing, selling, re-selling, or distributing healthcare products used by or on patients. All relevant financial relationships have been mitigated prior to the commencement of the activity.

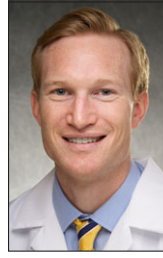


PRESENTERS



Juan Gonzalez Abraldes, MD

Professor
internal Medicine–Family Medicine &
Dentistry
University of Alberta, Canada



Alan Gunderson, MD

Clinical Associate Professor
Division of Gastroenterology and Hepatology
Department of Internal Medicine
University of Iowa Health Care



Munish Ashat, MD

Clinical Assistant Professor
Division of Gastroenterology and Hepatology
Department of Internal Medicine
University of Iowa Health Care



Dilek Ince, MD

Clinical Professor
Division of Infectious Diseases
Department of Internal Medicine
University of Iowa Health Care



Marta Tejedor Bravo, MD, MSc, PhD

Clinical Associate Professor
Clinical Director, James A Clifton Digestive
Health Center
Division of Gastroenterology and Hepatology
Department of Internal Medicine
University of Iowa Health Care



Virginia Hernandez-Gea, MD

Hepatologist
Clinic Barcelona
Barcelona, Spain



Kyle Brown, MD, MSc

Professor
Division of Gastroenterology and Hepatology
Department of Internal Medicine
University of Iowa Health Care



Yasameen Muzahim, MD

Clinical Assistant Professor
Division of Gastroenterology and Hepatology
Department of Internal Medicine
University of Iowa Health Care



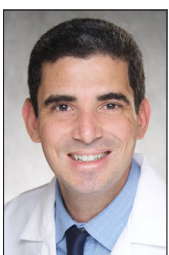
Jesse Civan, MD

Associate Professor
Internal Medicine - Gastroenterology
Medical Director - Liver Tumor Center
Thomas Jefferson University
Philadelphia, PA



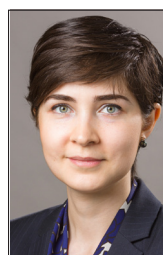
Sara Naimimohasses, MD, PhD

Clinical Assistant Professor
Division of Gastroenterology and Hepatology
Department of Internal Medicine
University of Iowa Health Care



Francisco Donato, Jr., MD

Clinical Assistant Professor
Department of Radiology
Division of Vascular and Interventional
Radiology
University of Iowa Health Care



Anahita Rabiee, MD, MHS

Assistant Professor of Medicine
Digestive Diseases
Yale School of Medicine
New Haven, CT

PRESENTERS



Antonio Sanchez, MD

Clinical Professor
Division of Gastroenterology and Hepatology
Department of Internal Medicine
University of Iowa Health Care



Tomohiro Tanaka, MD, MPH

Clinical Associate Professor
Division of Gastroenterology and Hepatology
Department of Internal Medicine
University of Iowa Health Care



Yolanda Villalvazo, MD

Hepatology Fellow
Division of Gastroenterology and Hepatology
Department of Internal Medicine
University of Iowa Health Care

The University of Iowa prohibits discrimination in employment, educational programs, and activities on the basis of race, creed, color, religion, national origin, age, sex, pregnancy (including childbirth and related conditions), disability, genetic information, status as a U.S. veteran, service in the U.S. military, sexual orientation, gender identity, or associational preferences. The university also affirms its commitment to providing equal opportunities and equal access to university facilities. For additional information on nondiscrimination policies, contact the Senior Director, Office of Civil Rights Compliance, the University of Iowa, 202 Jessup Hall, Iowa City, IA 52242-1316, 319-335-0705, daod-ocrc@uiowa.edu.

Individuals with disabilities are encouraged to attend all University of Iowa-sponsored events. If you are a person with a disability who requires a reasonable accommodation in order to participate in this program, please contact The Department of Internal Medicine Division of Gastroenterology and Hepatology in advance, 319-356-3108.

AGENDA: METABOLIC HEALTH IN MOTION • OAKDALE BALLROOMS 1-3

7:30 - 8:00 AM **Registration & Continental Breakfast**

8:00 - 8:15 **Welcome Address**
Marta Tejedor, MD, PhD

MORNING SESSION

8:15 - 8:45 **The Shifting Landscape of Cirrhosis: Diagnosis and risk stratification**
Antonio Sanchez, MD

8:45 - 9:15 **When to Refer: Recognizing Hepatic Decompensation and Liver Transplant Criteria**
Alan Gunderson, MD

9:15 - 9:45 **Infections in Cirrhosis: Prevention and Management**
Dilek Ince, MD

9:45 - 10:15 **Preventing Variceal Bleeding: from Beta-Blockers to Preemptive TIPS**
Juan Gonzales Abraldes, MD

10:15 - 10:45 **Break • Oakdale Ballrooms 4-5**

10:45 - 11:15 **Ascites Management in Cirrhosis: From Diuretics to TIPS**
Anahita Rabiee, MD, MHS

11:15 - 11:45 **Acute Kidney Injury in Cirrhosis: Hepatorenal Syndrome Update**
Marta Tejedor, MD, PhD

11:45 - 12:45 **Poster Sessions (no CME provided) • Oakdale Ballrooms 4-5**
Tomohiro Tanaka, MD, PhD & Kyle Brown, MD, MSc

12:45 - 1:15 PM **Lunch**

AFTERNOON SESSION

1:15 - 1:45 PM **Interventional Radiology and their magic: Technical Considerations and Portal Vein Thrombosis**
Francisco Donato, Jr., MD

1:45 - 2:15 **Endohepatology: when Endoscopy and Hepatology converge**
Munish Ashat, MD

2:15 - 2:45 **Baveno VIII update: what is new in Portal Hypertension?**
Virginia Hernandez-Gea, MD

2:45 - 3:15 **Break**

3:15 - 3:45 **Nutrition in Cirrhosis: Addressing Frailty and Malnutrition**
Sara Naimimohasses, MD, PhD

3:45 - 4:15 **Palliative Care in Cirrhosis: Improving Quality of Life in End-Stage Liver Disease**
Jesse Civan, MD

4:15 - 4:45 **Panel Discussion with the Experts**
Yasameen Muzahim, MD & Yolanda Villalvazo, MD

END CME

Vendor Exhibits • Oakdale Foyer